

EASY SET UP

The Simulab ArterialLine Trainer arrives pre-loaded with a replaceable artery and ultrasoundable tissue. To begin, follow the simple instructions below:

PREPARE THE FLUID

Prepare the simulated arterial blood. Simply fill the fluid mixing container with water, add a few drops of the red concentrate and mix.

FILL THE FLUID RESERVOIR

Remove the fluid tank cap and fill the fluid tank with 200 mL prepared simulated arterial blood.

POWER THE SYSTEM

Connect the Power Supply to the System, plug into a wall outlet and turn the power on with the power switch. If the system is properly powered, the switch will light up green.

FILL THE ARTERY

With an artery installed, press **FILL** until the artery has completely filled. To ensure the best imaging when using ultrasound, remove the hand cover to check the tubing for bubbles. If bubbles are present press **FILL** again until the fluid line is clear.

SYSTEM IS READY FOR USE

The system is ready for use! See back page for overview of system components.

DRAIN & REPLACE ARTERY

Push and hold **DRAIN** until the artery is clear of fluid. Turn system **OFF**. Remove tissue and replace artery.

CAUTION

To reduce risk of spray, drain artery completely before removing tissue.

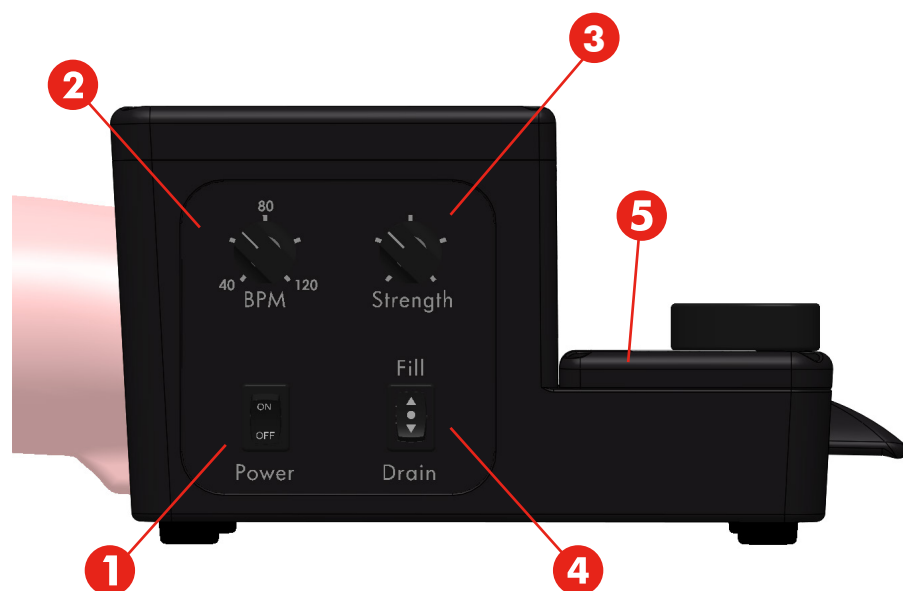
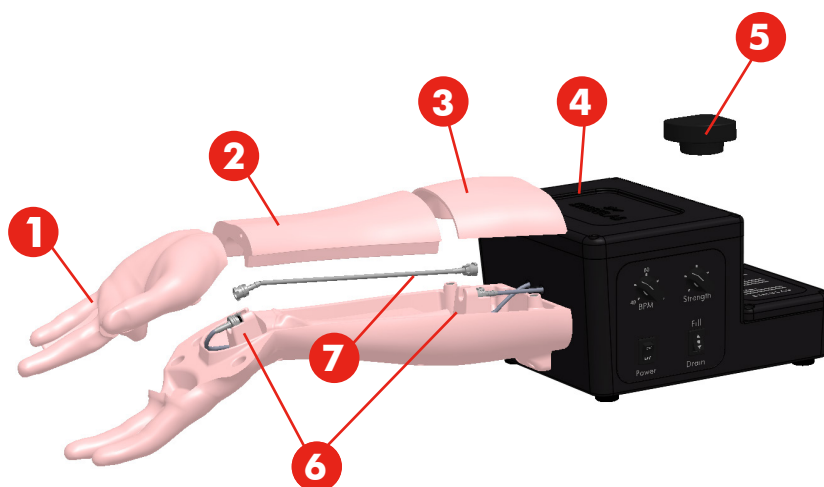
POWER OFF

Please drain fluid tank and vessel, and power **OFF** when not in use.

SYSTEM OVERVIEW

An overview of the Simulab ArterialLine Trainer components:

- 1** Hand Cover
- 2** Replaceable Tissue
- 3** Arm Cap
- 4** Battery Holder (*battery sold separately*)
- 5** Fluid Tank Cap
- 6** Artery Stands & Couplers
- 7** Replaceable Artery



- 1** Power Button
- 2** BPM Control
- 3** Pulse Strength Control
- 4** FILL/DRAIN Button
- 5** User Instructions

ARTERY REPLACEMENT

DRAIN VESSEL

Remove arm cap, press and hold the **DRAIN** button until the fluid has completely drained. Do **NOT** remove the tissue until the vessel has completely drained and lines are clear.

REMOVE TISSUE

When the vessel has been drained remove the hand cover and tissue.

REMOVE ARTERY FROM STANDS & DETACH CONNECTORS

Pull the artery up and out of the artery stands. **TWIST** each end of the connectors **counterclockwise** to release the clasp at the coupler. A small **CLICK** will be heard when the clasp is released. Repeat on the other end of the artery.

INSTALL NEW ARTERY INTO COUPLERS

Grab a new replaceable artery. To install, **TWIST** the couplers together clockwise until you hear a small **CLICK**. This click will indicate that the connection has been made. Repeat on the other end of the artery.

SECURE ARTERY IN STANDS

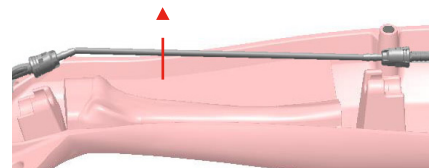
Replace and **SECURE** the connected artery into the artery stands.

REPLACE HAND COVER & ARM CAP

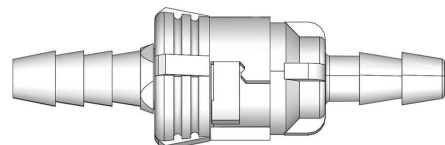
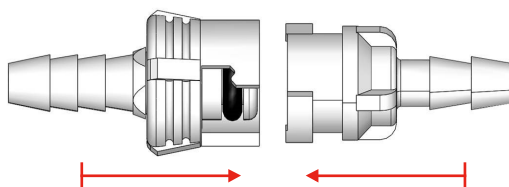
Replace the hand cover and the arm cap into their secured position before replacing tissue.

PLACE ARTERY IN REPLACEABLE TISSUE

Place the replaceable tissue into the tissue cradle. Start by laying in the wider side of the tissue. Ensure that the artery is **COMPLETELY TUCKED** into the **cut-out in the tissue before installing the rest of the tissue into the cradle**. If the tissue does not sit perfectly, lift the side of the tissue and make sure that the artery is aligned properly.



PULL ARTERY UP AND OUT OF STANDS



TWIST UNTIL IT CLICKS

QUICK TIPS

WARNING

Do **NOT** remove the replaceable tissue while in use. **DRAIN** vessel before removing tissue.

IMPORTANT

Between users, press the FILL button once to reset system.

DRAIN BEFORE CHANGING ARTERY

To prevent spray, drain the vessel **BEFORE** removing tissue.

DRAIN SYSTEM AFTER USE

At the end of each course and before storage, drain the vessel by pressing and holding the **DRAIN** button.

STORE SYSTEM EMPTY & REMOVE VESSEL

To allow system tubing to dry, ensure you have fully emptied the fluid tank and remove the vessel.

Ensure Artery is properly seated in the tissue.

